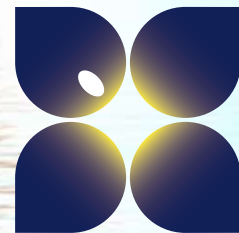


LOVE YOUR SENSES



passion
spas | luxury collection

THE PASSION SPAS LUXURY STORY

PERSONAL COMFORT

PLEASING MASSAGE

PERFECT WATER

PRECISION MADE

PLANET FRIENDLY

PROTECTION FOR YOU

PERSONAL COMFORT

Passion Luxury Spas was the first to introduce a two tone acrylic shell surface. This in combination with a form fit shell design provides you with luxurious underwater seating, hence the Luxury Collection name. This gives the Passion Luxury Spa Collection a graceful high class appearance.

PLEASING MASSAGE

This collection of Spas include jets that actively rotate and stimulate your entire body. The jets will give you a high performance massage that will help loosen tense muscles and delight your senses. The jets are also strategically positioned in a variety of Massage Pods that are designed to provide a unique hydrotherapy massage experience in each seat.

PERFECT WATER

Our filtration system automatically filters your spa water to help ensure that it is safe and clean. Passion Luxury Collection Spas are equipped with an Ozone Purifier that is highly effective in removing unwanted contaminants from the water by means of an electronic oxidation process. The system also includes a dedicated ozone treatment chamber where the ozone gas is compressed for superior performance and reliability. Select our optional AquaPure Water Management System™ for a self contained water purification system. This advanced solution is a natural way to create sanitizer and will ensure that your spa water is safe, clean fresh for you and your family to enjoy.

PRECISION MADE

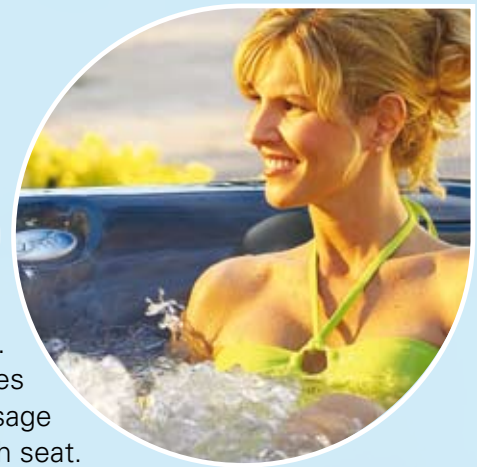
Passion Luxury Spas are constructed with an integrated metal support structure that is fastened to the spa floor and the spa shell. The Integrated Metal Support Structure's low profile design allows for a thicker insulation barrier which is vulcanized onto the perimeter walls creating one of the most energy efficient spas built today

PLANET FRIENDLY

The inside perimeter of the spa cabinet includes a highly efficient insulating material. This allows the excess heat generated by the spa motors to be utilized and assist in heating the spa water. In addition to making the spa more energy efficient, this method of insulation makes the spa operation extremely smooth and quiet. Our Passion Spas feature an electric heater which is used in combination with a special friction heater (Hybrid Technology™). The friction heater generates heat by disturbing water molecule movements and by producing free heat which is generated by the speed and movement of the water. This will allow you to enjoy the benefits of hot water and pleasing massage while saving money and the environment.

PROTECTION FOR YOU

All Passion Spa dealers have access to Passion Parts Depot Europe, where all possible parts of the spas are in stock. If necessary, these will be sent to the dealer within 24 hours. This ensures that if there is a problem, your dealer will be able to give you a quick and resolute solution.





PERSONAL COMFORT AND DESIGN
Beautiful and Graceful designed spa with Luxurious Underwater Seating



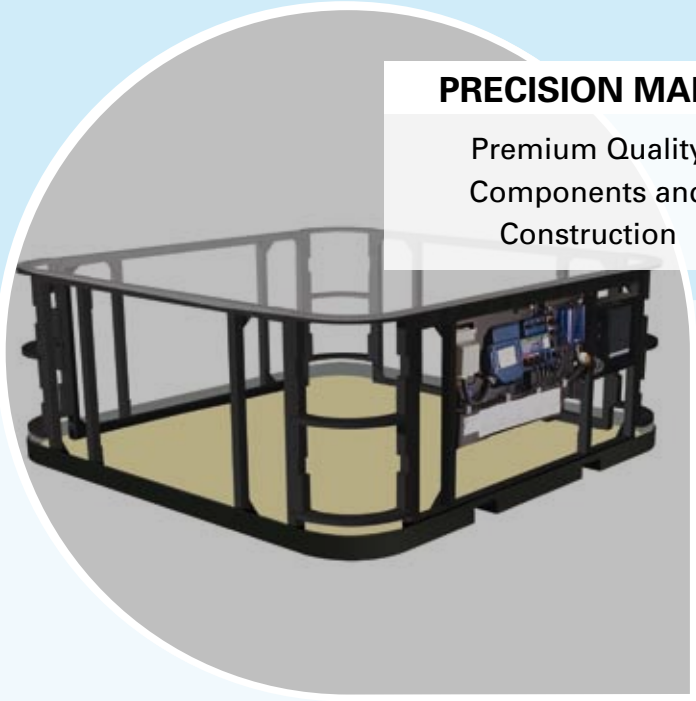
PLEASING MASSAGE
All Rotating Active Massage Jets in Massage Pods



PERFECT WATER
Automatic filtration system with optional AquaPure Maintenance System



PLANET FRIENDLY
Multi Source Heating/ Thermal Barrier Insulation



PRECISION MADE
Premium Quality Components and Construction

THE PASSION SPAS
LUXURY STORY

SPECIFICATIONS



AMORE

- Dimensions: 225 X 170 X 87 cm
- Water Capacity: 606 liters
- Multi-Layered Shell Construction
- Closed Cavity Thermal-Layered Insulation
- Insulated Foundation with Tower Shell Supports & Integrated Equipment Platforms
- Black Rhino TM Sure-Steel Support Structure
- Maintenance-Free Fully Insulated Exterior Cabinet
- StarBrite Interior Perimeter LED lighting
- 3 Seats, Including a Lounge
- 37 ALL-Active Rotational Hydrotherapy Jets with Styled Stainless Steel Trim
- Multiple Zoned Air Controls
- Soft Passion Pillows
- Ozone Oxidation System for Cleaner Water
- Cascading Water Fall
- Gravity Floor Drain
- Aromatherapy
- Programmable Filtration System with High-Volume Skimmer
- One High-Flow 3 HP Pump
- Intel-a-Flow Heating System
- LED Safety and Mood Light
- Heat Shield Insulated Cover
- Stereo System with Pop Up Speakers

TECHNICAL SPECIFICATIONS

- Pump 1: 2 Speed, 3 HP
- Pump 2: Airblower
- Pump 3: Circulation pump
- Filtration: Two Single Cartridge
- Control System: Balboa
- Heating System: 3KW Heating
- Dry Weight: 288 Kgs
- Filled Weight: 894 Kgs
- Insulation: Double Thermal
- Electrical Requirements: 240 V / 20 A

COLORS

- * Cameo White - Grey Cabinet
- * Cameo White - Mahogany Cabinet
- * Silk Grey - Mahogany Cabinet
- * Denim Blue - Grey Cabinet



ENERGY

- Dimensions: 205 x 205 x 88 cm
- Water Capacity: 946 liters
- Multi-Layered Shell Construction
- Closed Cavity Thermal-Layered Insulation
- Insulated Foundation with Tower Shell Supports & Integrated Equipment Platforms
- Black Rhino TM Sure-Steel Support Structure
- Maintenance-Free Fully Insulated Exterior Cabinet
- StarBrite Interior Perimeter LED lighting
- 6 Seats, Including a Lounge
- 48 ALL-Active Rotational Hydrotherapy Jets with Styled Stainless Steel Trim
- Multiple Zoned Air Controls
- Soft Passion Pillows
- Ozone Oxidation System for Cleaner Water
- Cascading Water Fall
- Gravity Floor Drain
- Aromatherapy
- Programmable Filtration System with High-Volume Skimmer
- One High-Flow 3 HP Pump
- Intel-a-Flow Heating System
- LED Safety and Mood Light
- Heat Shield Insulated Cover
- Stereo System with Pop Up Speakers

TECHNICAL SPECIFICATIONS

- Pump 1: 2 Speed, 3 HP
- Pump 2: Airblower
- Pump 3: Circulation pump
- Filtration: Two Single Cartridge
- Control System: Balboa
- Heating System: 3KW Heating
- Dry Weight: 313 Kgs
- Filled Weight: 1260 Kgs
- Insulation: Double Thermal
- Electrical Requirements: 240 V / 20 A

COLORS

- * Cameo White - Grey Cabinet
- * Cameo White - Mahogany Cabinet
- * Silk Grey - Mahogany Cabinet
- * Denim Blue - Grey Cabinet



SPIRIT

- Dimensions: 212 x 212 x 88 cm
- Water Capacity: 985 liters
- Multi-Layered Shell Construction
- Closed Cavity Thermal-Layered Insulation
- Insulated Foundation with Tower Shell Supports & Integrated Equipment Platforms
- Black Rhino TM Sure-Steel Support Structure
- Maintenance-Free Fully Insulated Exterior Cabinet
- StarBrite Interior Perimeter LED lighting
- 6 Seats, Including a Lounge
- 63 ALL-Active Rotational Hydrotherapy Jets with Styled Stainless Steel Trim
- Multiple Zoned Air Controls
- Soft Passion Pillows
- Ozone Oxidation System for Cleaner Water
- Cascading Water Fall
- Gravity Floor Drain
- Aromatherapy
- Programmable Filtration System with High-Volume Skimmer
- Two High-Flow 3 HP Pumps
- Intel-a-Flow Heating System
- LED Safety and Mood Light
- Heat Shield Insulated Cover
- Stereo System with Pop Up Speakers

TECHNICAL SPECIFICATIONS

- Pump 1: 2 Speed, 3 HP
- Pump 2: 2 Speed, 3 HP
- Pump 3: Airblower
- Pump 4: Circulation pump
- Filtration: Two Single Cartridge
- Control System: Balboa
- Heating System: 3KW Heating
- Dry Weight: 360 Kgs
- Filled Weight: 1345 Kgs
- Insulation: Double Thermal
- Electrical Requirements: 240 V / 20 A

COLORS

- * Cameo White - Grey Cabinet
- * Cameo White - Mahogany Cabinet
- * Silk Grey - Mahogany Cabinet
- * Denim Blue - Grey Cabinet



EXCITE

- Dimensions: 225 x 225 x 92 cm
- Water Capacity: 1098 liters
- Multi-Layered Shell Construction
- Closed Cavity Thermal-Layered Insulation
- Insulated Foundation with Tower Shell Supports & Integrated Equipment Platforms
- Black Rhino TM Sure-Steel Support Structure
- Maintenance-Free Fully Insulated Exterior Cabinet
- StarBrite Interior Perimeter LED lighting
- 7 Seats
- 74 ALL-Active Rotational Hydrotherapy Jets with Styled Stainless Steel Trim
- Multiple Zoned Air Controls
- Soft Passion Pillows
- Ozone Oxidation System for Cleaner Water
- Cascading Water Fall
- Gravity Floor Drain
- Dome
- Blasters
- Aromatherapy
- Programmable Filtration System with High-Volume Skimmer
- Two High-Flow 3 HP Pumps
- Intel-a-Flow Heating System
- LED Safety and Mood Light
- Heat Shield Insulated Cover
- Stereo System with Pop Up Speakers

TECHNICAL SPECIFICATIONS

- Pump 1: 2 Speed, 3 HP
- Pump 2: 2 Speed, 3 HP
- Pump 3: Airblower
- Pump 4: Circulation pump
- Filtration: Two Single Cartridge
- Control System: Balboa
- Heating System: 3KW Heating
- Dry Weight: 393Kgs
- Filled Weight: 1490 Kgs
- Insulation: Double Thermal
- Electrical Requirements: 240 V / 20 A

COLORS

- * Cameo White - Grey Cabinet
- * Cameo White - Mahogany Cabinet
- * Silk Grey - Mahogany Cabinet
- * Denim Blue - Grey Cabinet



DESIRE

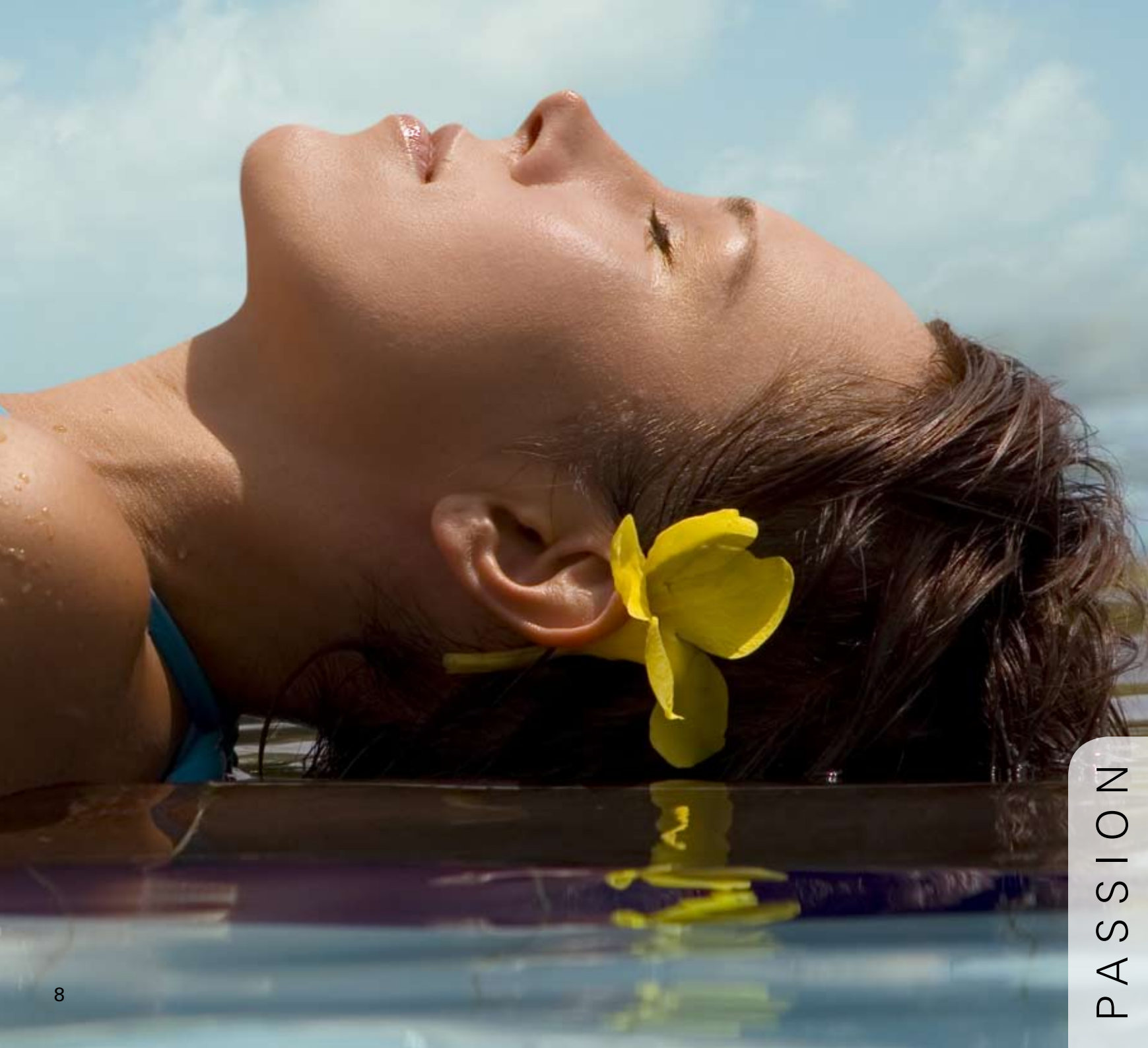
- Dimensions: 240 x 240 x 92 cm
- Water Capacity: 1515 liters
- Multi-Layered Shell Construction
- Closed Cavity Thermal-Layered Insulation
- Insulated Foundation with Tower Shell Supports & Integrated Equipment Platforms
- Black Rhino TM Sure-Steel Support Structure
- Maintenance-Free Fully Insulated Exterior Cabinet
- StarBrite Interior Perimeter LED lighting
- 6 Seats, Including a Lounge
- 66 ALL-Active Rotational Hydrotherapy Jets with Styled Stainless Steel Trim
- Multiple Zoned Air Controls
- Soft Passion Pillows
- Ozone Oxidation System for Cleaner Water
- Cascading Water Fall
- Gravity Floor Drain
- Aromatherapy
- Programmable Filtration System with High-Volume Skimmer
- Two High-Flow 3 HP Pumps
- Intel-a-Flow Heating System
- LED Safety and Mood Light
- Heat Shield Insulated Cover
- Stereo System with Pop Up Speakers

TECHNICAL SPECIFICATIONS

- Pump 1: 2 Speed, 3 HP
- Pump 2: 2 Speed, 3 HP
- Pump 3: Airblower
- Pump 4: Circulation pump
- Filtration: Two Single Cartridge
- Control System: Balboa
- Heating System: 3KW Heating
- Dry Weight: 424 Kgs
- Filled Weight: 1935 Kgs
- Insulation: Double Thermal
- Electrical Requirements: 240 V / 20 A

COLORS

- * Cameo White - Grey Cabinet
- * Cameo White - Mahogany Cabinet
- * Silk Grey - Mahogany Cabinet
- * Denim Blue - Grey Cabinet



PASSION

DESIRE

The Desire is sophisticated and stylish in every type of accommodation. Seating six, the Desire allows you to feel like you're on a private vacation. Including a 66 luxury hydrotherapy jet package and a comfortable blissful lounge, the Desire is the King of the Passions.





EXCITE

The Excite mixes space and style in a stunning way.

Comfortably seating seven people, the Excite makes a perfect centerpiece for your back garden. Your family and friends can share in laughter and good conversation while the spa makes a statement of its own. Turn on the sparkling waterfalls for background atmosphere at a garden party or a barbecue or put on some music to create an entertaining atmosphere.



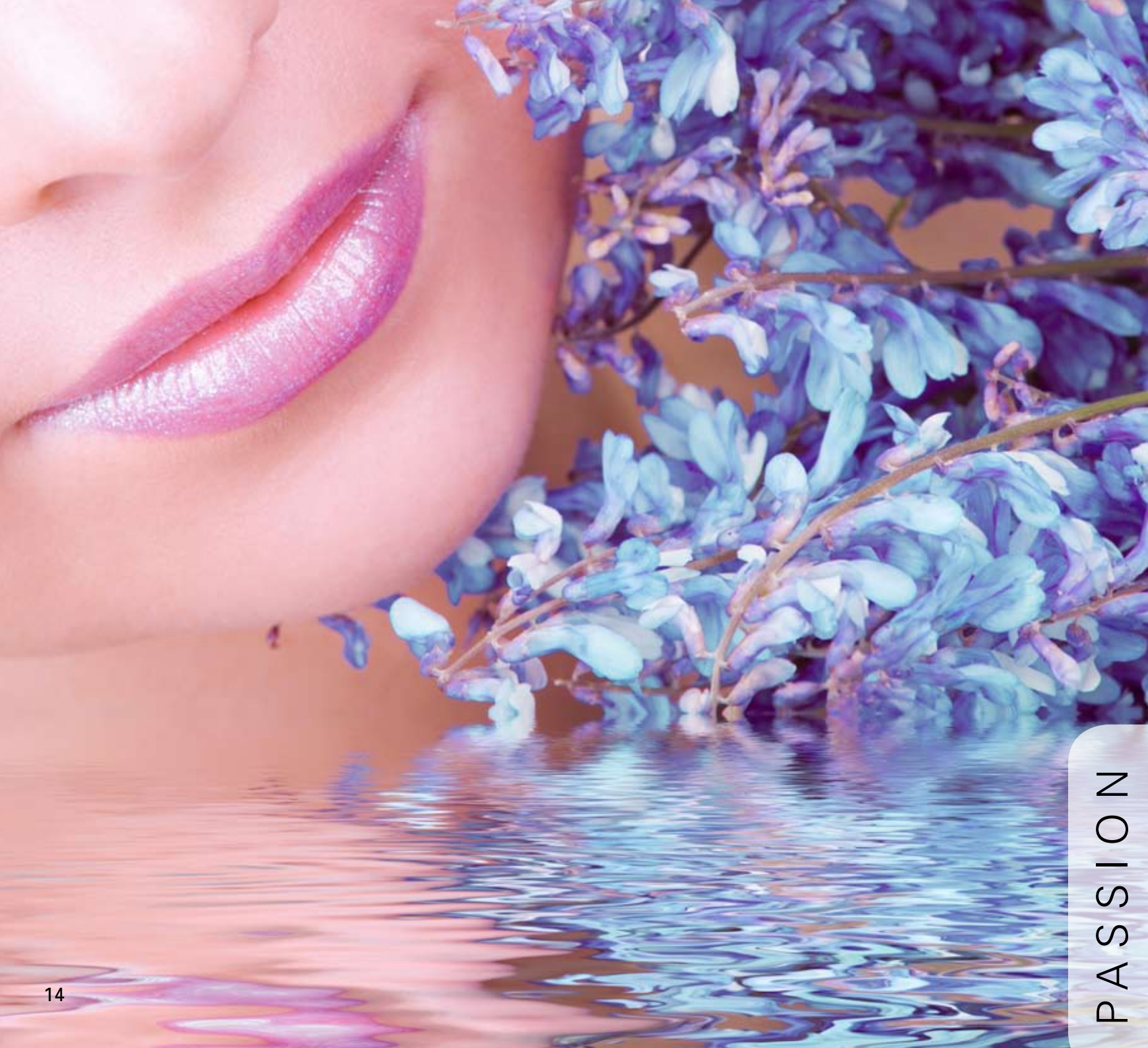


PASSION

SPIRIT

This exotic spa combines space and luxury with six spectacular seats, 63 advanced hydrotherapy jets and all of our innovative features and design. Whether you stretch out in the lounge or kick back in the Captain's Corner, you will find the Spirit is a taste of paradise.





PASSION

ENERGY

The Energy encompasses 48 deep hydrotherapy jets with six comfortable seats. Combining the most advanced ergonomic features as well as striking aesthetics and magnificent color options, the Energy is an exquisite treasure.





PASSION

AMORE

Cosy and charming, the three-seat Amore is our most romantic spa. With 37 hydrotherapy jets, a soothing waterfall, aromatherapy and European-contoured seating, you can step into the Amore and discover your own private oasis. This spa can be an intimate setting for two or an ideal space to rejuvenate and relax alone.





PASSION COLLECTION

SAUNA



BLISS
CHEER
SMILE
JOY



PLEASURE
HAPPY
DELIGHT
ADMIRE

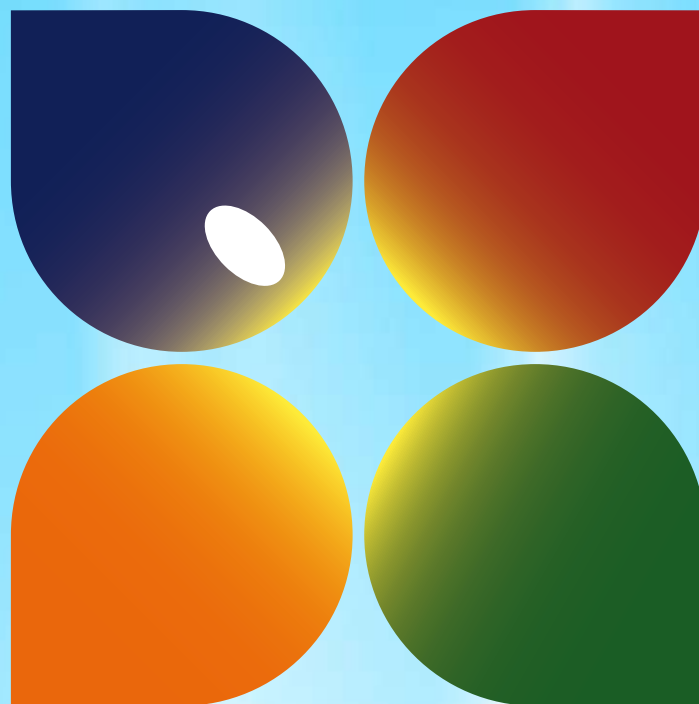


SOULMATE
FANTASY
IMAGINE
DREAM



SAUNA





passion
spas | love your senses

Fonteyn • Meervelderweg 52 • 3888 NK Uddel • The Netherlands

Phone: 0031 577 456040 • info@passionspas.com

www.passionspas.com

